



## 4 Copthall House Victoria Road

Aldershot, GU11 1SH

£925 PCM

A South facing first floor apartment within walking distance of the station and town is now available. This property comes with allocated parking, an impressive 16ft lounge, fitted kitchen, bathroom with shower over bath.

Offering great commuter links including easy access to the M3 and A3, combined with the train station which serves London Waterloo in under an hour; Aldershot is in a great location. The town centre is well located and offers a rich history that can be noted around the areas as well as a choice of leisure facilities including a lido and sports centre, along with two theatres, a cinema and a choice of high street shops, restaurants and parks.

- Close to station
- 1st floor
- Parking included
- One double bedroom
- Town Centre
- Available Now
- Appliances included
- Five Week Deposit £1096.15
- Council Tax Band B
- EPC Energy Rating Band (C) 66

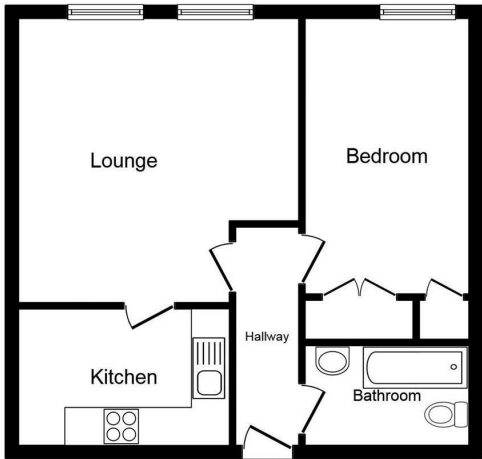
### Viewing

Please contact our Fosters Lettings Office on 01252 344333 if you wish to arrange a viewing appointment for this property or require further information.





Floor Plan



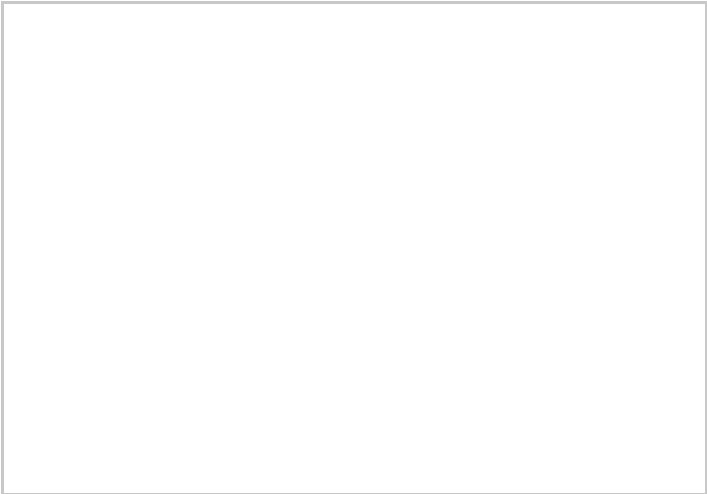
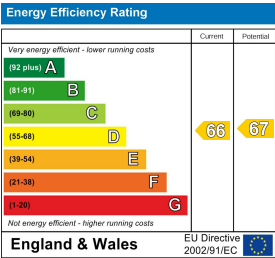
Floor Plan

This plan is for illustration purposes only and may not be representative of the property. Plan not to scale.

Area Map



Energy Efficiency Graph



These particulars, whilst believed to be accurate are set out as a general outline only for guidance and do not constitute any part of an offer or contract. Intending purchasers should not rely on them as statements of representation of fact, but must satisfy themselves by inspection or otherwise as to their accuracy. No person in this firms employment has the authority to make or give any representation or warranty in respect of the property.